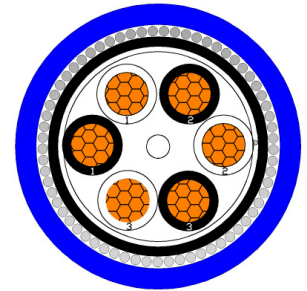
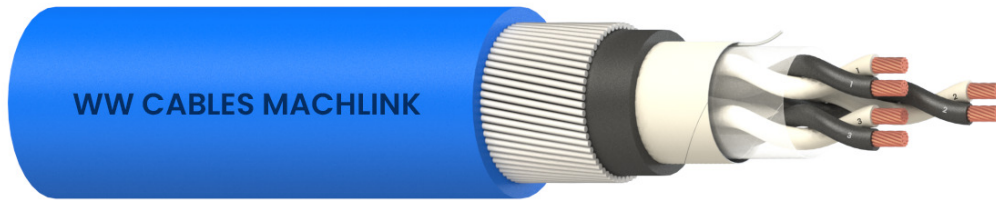




Multi-Pair PVC Insulated Instrumentation Cables 110V, Cu, Overall Screened, Armoured



Note: The above drawing is for representation purpose only.

Description

Conductor:	Class 2 Plain Annealed Copper
Insulation:	PVC V-90
Overall Screen:	Aluminium foil/Polyester tape with a 7/0.2mm tinned annealed copper drain wire
Bedding:	PVC 5V-90
Armour:	Galvanised Steel Wire Armour
Sheath:	PVC 5V-90

Core identification

Black and white coloured cores with numbered pairs

Sheath Colour

Blue

Technical Data

Rated Voltage:	Max. 300V a.c.
Nominal Voltage:	≤ 110V a.c. / 150V d.c.
Operating Temperature:	-25°C to +75°C, Maximum 90°C*
	*Not subject to severe mechanical pressure at temperatures higher than 75°C.
Short Circuit Temperature :	160°C for 5 sec

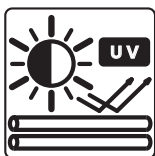
Standards Compliance

AS/NZS 1125	AS/NZS 1660.5.6 (Equivalent to IEC 60332-1)
AS/NZS 3808	AS/NZS 1660.5.1 (Equivalent to IEC60332-3-24)
UL Style 2464	

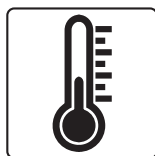
Characteristics



FLAME RETARDANT



UV RESISTANT



-25°C ~ +75°C



GREEN STAR

The information in this specification is to be used as a guide only. World Wire Cables (Aust) Pty Ltd has taken all due care in compiling the information in this specification but accepts no responsibility for any errors or omissions. All information provided in this specification is covered by copyright.





Multi-Pair PVC Insulated Instrumentation Cables 110V, Cu, Overall Screened, Armoured

Physical & Electrical Characteristics

WWC Product Code	Conductor Size mm ² (AWG)	Number of Pairs	Conductor Diameter (mm)	Insulation Thickness (mm)	Approx. Overall Diameter (mm)	Min. Bending Radius (mm)		Approx. Weight (kg/100m)
						During Installation	After Installation	
*SM5531BLU	0.5 (20) (7/0.30mm)	1	0.9	0.4	10.1	191	127	20.2
*SM5532BLU		2	0.9	0.4	12.5	236	158	28.7
*SM5533BLU		4	0.9	0.4	14.0	265	176	35.4
*SM5534BLU		6	0.9	0.4	16.5	312	208	56.8
5535BLU		8	0.9	0.4	17.1	323	215	63.4
5530BLU		10	0.9	0.4	19.5	369	246	73.6
5536BLU		12	0.9	0.4	20.0	378	252	81.8
*SM5537BLU		16	0.9	0.4	21.9	414	276	106.8
*SM5540BLU		20	0.9	0.4	24.1	455	304	122.9
*SM5538BLU		24	0.9	0.4	25.7	486	324	136.9
*SM5539BLU		36	0.9	0.4	29.9	565	377	175.3
*SM5541BLU		50	0.9	0.4	35.1	663	442	245.9
<hr/>								
5501BLU	1.5 (16) (7/0.50mm)	1	1.47	0.4	11.4	215	144	26.1
5502BLU		2	1.47	0.4	14.8	280	186	38.9
5504BLU		4	1.47	0.4	17.6	333	222	64.7
5506BLU		6	1.47	0.4	20.0	378	252	83.0
5508BLU		8	1.47	0.4	21.4	404	270	92.9
5510BLU		10	1.47	0.4	24.0	454	302	125.8
5512BLU		12	1.47	0.4	24.6	465	310	133.4
5516BLU		16	1.47	0.4	26.7	505	336	158.7
*SM5520BLU		20	1.47	0.4	28.4	537	358	180.2
5524BLU		24	1.47	0.4	32.7	618	412	235.7
*SM5556BLU		36	1.47	0.4	37.0	699	466	303.7
*SM5550BLU		50	1.47	0.4	42.6	805	537	385.1

© World Wire Cables (Aust) Pty Ltd. All Rights Reserved.

*These cables are non-stocked items subject to lead times.

Conductor Size (mm ²)	Maximum D.C. Resistance of conductor at 20°C (Ω/km)	Maximum Capacitance (Cond. to Cond.) (pF/m)	Approximate Inductance @ 1kHz (mH/km)	L/R Ratio @ 1kHz (μH/Ω)
0.5	38.4	82	1.00	13.7
1.5	13.6	110	0.95	36.5

The information in this specification is to be used as a guide only. World Wire Cables (Aust) Pty Ltd has taken all due care in compiling the information in this specification but accepts no responsibility for any errors or omissions. All information provided in this specification is covered by copyright.

